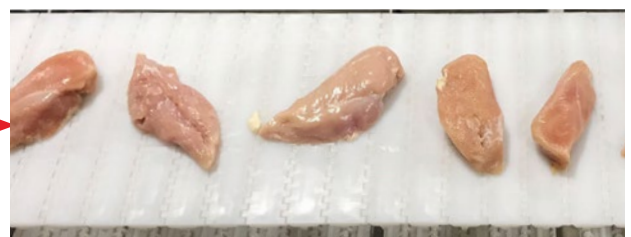
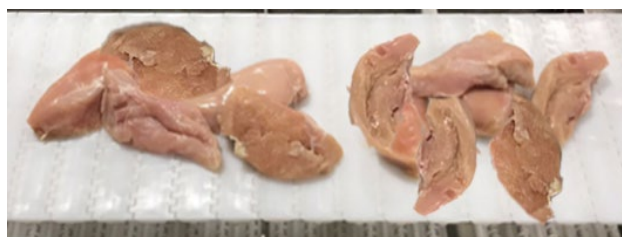


Poultry Singulator

Automatically add space between poultry products. The Poultry Singulator is designed to accept large batches of products and will space them out on the conveyor belt for proper flows to downstream processes such as X-ray, trimming, or breading. Eliminates the need for labor to space out pieces on conveyor lines.

- Up to 60 pieces per minute
- Custom configuration
- Reduce labor costs
- Reduce product rework
- Reduce human contact
- Easy to clean and maintain
- Simple controls
- Small footprint
- Automatic jam clearing



POULTRY SINGULATOR

MODEL PS-60

Drake's new automatic poultry singulator receives whole muscle protein products and spaces them apart. Products enter the PS-60 touching each other and exit individually with space between them (i.e. singulated).

The PS-60 aids further processing equipment, such as x-ray machines, that need to receive singulated product for the most efficient processing. Singulation enables equipment to reject only one piece of product at a time, rather than several pieces all at once, which significantly reduces product rework. This unit can accommodate a variety of product sizes.

The poultry singulator has a compact footprint and can be designed by Drake to fit into multiple configurations. It fits well into existing production lines and its low height makes it convenient to clean and maintain.

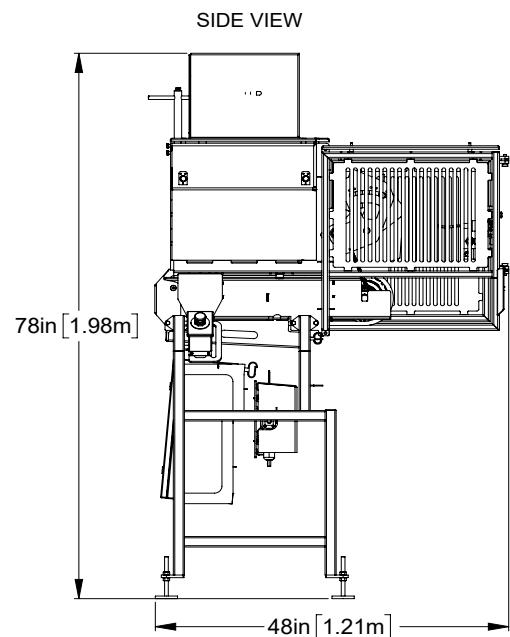
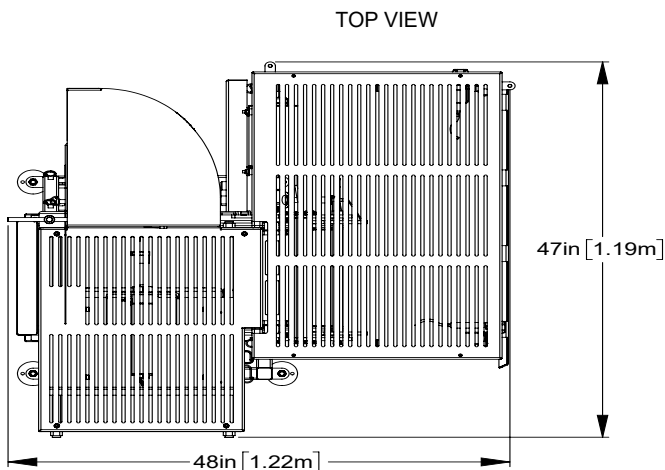
It singulates up to sixty poultry pieces per minute. The entire unit is operated by a simple push button controls system.

The PS-60 is designed to automatically clear product jams. All areas with moving parts of this machine are completely guarded.

The poultry singulator offers several of the hygienic and safety benefits of Drake's traditional loaders. It is built for wash-down and is made of high-grade stainless steel.

The Drake Company has over thirty years of experience designing food industry equipment that is built to last.

All Drake machines are proudly made in the USA.



Drake Model PS-60 Utility Specifications	
Voltage	230, 380, or 460 VAC 50 or 60 Hz
Compressed Air	1 SCFM